



2011 Allamakee County Fair

July 20th - 24th

Open Class Exhibits



All Allamakee County Residents are Invited to Participate

Location:

**Open Class Exhibits Building
Allamakee County Fair Grounds
Waukon, Iowa**

Special Contests and Activities in the Open Class Exhibits Building

Wednesday, July 20th

Enter Your exhibits between 1:00 pm and 8:00 pm

Thursday, July 21st

Judging in AM - Building open to public at noon

Ugly Cake Contest - 3:00 pm

Herb Demonstrations by Allamakee Master Gardeners - 4:30 pm - 6:30 pm

Friday, July 22nd

Bugs for Kids by Bob Hauer from ISU Extension - 11:00 am - 1:00 pm

Children's Cookie Decorating Contest by Kitchen Krafts - 2:00 pm

New Event! Homemade Farm Gadgets - judging at 3:00 pm

Saturday, July 23rd

Preschool Nature Crafts by Tara Reisinger - 11:00 am - 1:00 pm

Build a Scarecrow Contest by Mary Trebbien (enter as an individual or as a group) - 2:00 pm

Viewers' Choice voting for Scarecrows - 4:00 pm - 6:00 pm

Sunday, July 24th

New Event! Take a Pair of Jeans by Mark Kay Winke (projects from old jeans) 1 pm - 2 pm

Craft Demonstrations including: * Tatting by Ada Marie Kerndt * Crocheting by Jessica Howe

* Knitting by Pam Kerndt * Big-Stitch Quilting by Joyce Bakke - 2:00 pm - 3:30 pm

Entries are released - 4:00 pm - Come and pick up your entries and your prizes!

Additional Judge's Choice Awards may be given in the following categories:

Children's Garden

Flowers - Blooms

Arts & Crafts - Ages 5 - 10

Flowers - Plant or Arrangement

Arts & Crafts - Ages 11 - 18

Agricultural Products

Arts & Crafts - Adult

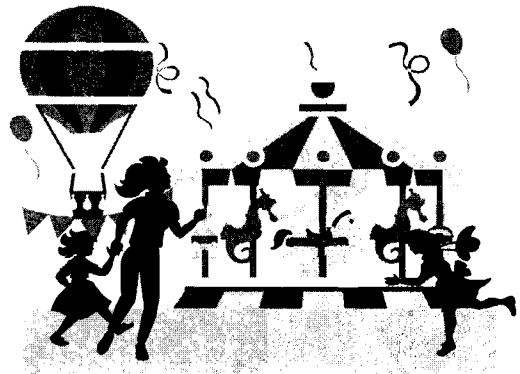
Textiles and Fabrics

Antiques and Collectables

The Allamakee Master Gardeners look forward to seeing you at the Fair.

2011 Allamakee County Fair Open Class Rules

1. All residents of Allamakee County are welcome to place entries in the Divisions listed (Youth, Flowers, Agricultural Products, Textiles & Fabric, Arts & Crafts, and Antiques & Collections).
2. All items in all Divisions will receive premiums of the same value: Blue \$1.00, Red 75 cents, White 50 cents.
3. Entries will be accepted between 1:00 pm and 8:00 pm on the Wednesday before the fair starts.
4. It is encouraged to complete the entry form on the last page before submitting your entries.
5. You may enter only one item for each exhibit number. (Example: one item for A-1 Allium)
6. Articles entered at a previous Allamakee county fair may not be exhibited in competition again.
7. Exhibits are open to non-professional only. Items entered in Divisions Youth, A, B, C, and D need to be the work of the Exhibitor (plants grown and/or displayed, foods prepared, textiles & fabric work and art & craft creations) except for Division E (antiques & collectibles).
8. Items entered by professionals in their field of experience are for display only, not competition.
9. Flowers and vegetables will be judged in accordance with the rules and regulations outlined by the Iowa State University Extension. (These are available at the Allamakee Extension Office.)
10. The Fair Association will provide containers for cut flowers.
With this exception: the exhibitor must provide his or her own container for the Artistic Arrangement Division.
11. Houseplants must have been in your possession for at least three months prior to exhibition.
12. The judges will disqualify exhibits that do not meet specifications of the entry list. E.g. If the schedule calls for a definite number, a greater or smaller number will disqualify your entry.
13. Your name may not be visible for judging.
14. Entries will be released at 4:00pm on Sunday, the last day of the fair.
15. The Fair is not responsible for any loss or damage.



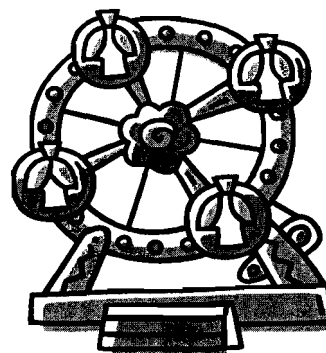
Welcome to the fair!!!!

Only one item for each exhibit number.

You may fill out entry form on last page.

Bring entries to Open Class Exhibits Building at the Fair on Wednesday between 1 pm and 8 pm.

Your name must not be visible for judging.



Youth Division

Children's garden - 12 years and under

- Y-1 Animal novelty
- Y-2 Bean, snap, longest
- Y-3 Berries - 12
- Y-4 Biggest Zucchini
- Y-5 Flower - red - 3
- Y-6 Flower - white - 3
- Y-7 Flower - yellow - 3
- Y-8 Flower - other color - 3
- Y-9 Fruit - 3
- Y-10 Grain plant
- Y-11 Peapod with most peas
- Y-12 Soybean plant with most pods
- Y-13 Tallest corn - measured when entered
- Y-14 Vegetable - 3
- Y-15 Other - list name of item on tag

Children and Students Baked Goods

- Y-16 Age 5 - 10 yrs
- Y-17 Age 11 - 18 yrs

Children and Students Arts & Crafts

Children's - age 5 - 10 yrs

- Y-18 Chalk Crayon
 - Y-19 Clay Object
 - Y-20 Collage
 - Y-21 Colored Pencil
 - Y-22 Crayon
 - Y-23 Fiber - weaving or macrame
 - Y-24 Finger Painting
 - Y-25 Marker
 - Y-26 Painting
 - Y-27 Photography
 - Y-28 Pottery
 - Y-29 Scrapbook
 - Y-30 Sewing
 - Y-31 Other - list name of item on tag
-

Students - age 11-18 yrs

- Y-32 Chalk Crayon
 - Y-33 Charcoal
 - Y-34 Colored pencil drawing
 - Y-35 Crayon
 - Y-36 Fiber - weaving or macrame
 - Y-37 Markers
 - Y-38 Metal Tooling
 - Y-39 Oil or acrylic
 - Y-40 Pastel Drawing
 - Y-41 Pen & Ink
 - Y-42 Pencil drawing
 - Y-43 Photography
 - Y-44 Poster
 - Y-45 Pottery
 - Y-46 Prints - intaglios, linoleum, wood block, etc.
 - Y-47 Scratchboard
 - Y-48 Sculpture
 - Y-49 Tempera Painting
 - Y-50 Watercolor
 - Y-51 Woodworking
 - Y-52 Other - list name of item on tag
-

Division A: Amateur Flower Show**Flowers**

A-1	Allium - 1 bloom	A-53	Lavender, 3 stems
A-2	Asclepia - 1 bloom	A-54	Liatris - 1 stems
A-3	Astilbe - 1 stem	A-55	Lily (Oriental/Asian) - white - 1 stem
A-4	Astilbe - 3 stems	A-56	Lily (Oriental/Asian) - orange - 1 stem
A-5	Baby's Breath - pink - 3 sprays	A-57	Lily (Oriental/Asian) - other - 1 stem
A-6	Baby's Breath - white - 3 sprays	A-58	Lily (Oriental/Asian) - pink - 1 stem
A-7	Bachelor Button - 3 blooms	A-59	Lily (Oriental/Asian) - red - 1 stem
A-8	Balloon flower - 1 bloom	A-60	Lily (Oriental/Asian) - yellow - 1 stem
A-9	Begonia - 1 bloom	A-61	Loosestrife - white - gooseneck - 1 stem
A-10	Branch, berried - 1 stem	A-62	Lupine - 1 bloom
A-11	Branch, flowered - 1 stem	A-63	Marigold, dwarf, 3 blooms
A-12	Calendula - 3 blooms	A-64	Marigold, large, 3 blooms
A-13	Calla lily - 3 blooms	A-65	Monarda - 1 stem
A-14	Catch fly - 1 bloom	A-66	Monarda - 3 stems
A-15	Centranthus - 1 bloom	A-67	Moss Rose - 3 stems
A-16	Centauria montana - 1 bloom	A-68	Nasturtium - 3 blooms
A-17	Clematis - 1 bloom	A-69	Nicotiana - 3 blooms
A-18	Cleome - 1 bloom	A-70	Pansies - 3 stems
A-19	Coleus, 3 stems	A-71	Petunias - ruffled - 3 stems
A-20	Coneflower - 1 bloom	A-72	Petunias - single - 3 stems
A-21	Coneflower - 3 blooms	A-73	Phlox, perennial - 1 bloom
A-22	Coral bells - 3 stems	A-74	Pinks, 3 blooms
A-23	Coreopsis, single - 3 stems	A-75	Queen of the prairie - 1 bloom
A-24	Coreopsis, double - 3 stems	A-76	Rose - hybrid collection - 4 blooms
A-25	Cosmos, 3 blooms	A-77	Rose - hybrid pink - 1 bloom
A-26	Dahlia, 1 bloom	A-78	Rose - hybrid red - 1 bloom
A-27	Dahlia, 3 blooms	A-79	Rose - hybrid salmon - 1 bloom
A-28	Daisies, white - 3 stems	A-80	Rose - hybrid white - 1 bloom
A-29	Daisies, yellow - 3 stems	A-81	Rose - hybrid yellow - 1 bloom
A-30	Daylily (Hemerocallis) - red - 1 stem	A-82	Rose - shrub - 1 bloom
A-31	Daylily (Hemerocallis) - orange - 1 stem	A-83	Rose - shrub - 3 bloom
A-32	Daylily (Hemerocallis) - other - 1 stem	A-84	Rose hybrid - Other
A-33	Daylily (Hemerocallis) - pink - 1 stem	A-85	Rudbeckia - 1 bloom
A-34	Daylily (Hemerocallis) - yellow - 1 stem	A-86	Rudbeckia - 3 blooms
A-35	Delphinium, 1 spike	A-87	Salvia - other - 1 stem
A-36	Eryngium - sea holly - 1 stem	A-88	Salvia, red - 1 stems
A-37	Feverfew, 3 stems	A-89	Scabiosa - 1 bloom
A-38	Gaillardia - 1 bloom	A-90	Snapdragon - 3 spikes
A-39	Geranium - 1 bloom	A-91	Stachys - lambs ears - 1 stem
A-40	Gerbera daisy - 1 bloom	A-92	Sweet William - 1 stem
A-41	Globe Thistle - 1 stem	A-93	Verbena - 1 stem
A-42	Heliopsis - 1 bloom	A-94	Veronica - 1 bloom
A-43	Hollyhock - 1 stem	A-95	Yarrow, other - 1 stem
A-44	Hosta flower - 1 stem	A-96	Yarrow, pink - 1 stem
A-45	Hosta flower - 3 stems	A-97	Yarrow, yellow - 1 stem
A-46	Hosta leaf - 1 stem	A-98	Zinnias, large - 3 blooms
A-47	Hosta leaf - 3 stems	A-99	Zinnias, mini - 3 blooms
A-48	Hydrangea - 1 bloom	A-100	Other - list name of item on tag
A-49	Hydrangea - 3 blooms		
A-50	Impatiens, 1 stem		
A-51	Larkspur, 1 stem		
A-52	Larkspur, 3 stems		

*Containers are supplied for cut flowers.
See #10 of Open Class Rules, p. 2.*

Division A continued**Outdoor Potted Plants**

- A-101 Begonia
- A-102 Chrysanthemum
- A-103 Coleus
- A-104 Impatiens
- A-105 Ivy
- A-106 Petunias
- A-107 Geraniums
- A-108 Mixed
- A-109 Other - list name of item on tag

*Remember:**Only one item for each exhibit number.**You may fill out entry form on last page.**Bring entries to the Open Class Exhibits Building at the fair on Wednesday between 1 pm and 8 pm.**Entries open to non-professionals only.**Please see #7 on Open Class Rules, p. 2***Indoor Potted Plants**

- A-110 African violet, double, any color
- A-111 African violet, single, any color
- A-112 Baby's tears
- A-113 Cactus garden
- A-114 Cactus, single plant
- A-115 Fern
- A-116 Ivy
- A-117 Philodendron
- A-118 Spider plant
- A-119 Succulent
- A-120 Terrarium
- A-121 Other - list name of item on tag

*Flowers will be judged according to Iowa State Extension rules - see # 8 of Open Class Rules.**Houseplants must be in your possession for at least three months before the fair.**Exhibitors provide their own containers for Artistic Arrangements.***Artistic Arrangements**

- A-122 Blue - Out of the Blue - using blue flowers and foliage
- A-123 Green - Verdant Green - all green arrangements
- A-124 Orange Crush - orange flower arrangements
- A-125 Pink - In the Pink - pink flowers arrangements
- A-126 Purple Passion - purple flower arrangements
- A-127 Red Hots - using shades of red and orange
- A-128 White - Snow White - using white flowers and foliage
- A-129 Yellow - Bouquet of Sunshine - design in yellow
- A-130 Child's party arrangement
- A-131 Christmas arrangement
- A-132 Fourth of July arrangement - using red, white and blue flowers and foliage
- A-133 Thanksgiving arrangement
- A-134 Valentine's Day arrangement
- A-135 Flora and Fauna - using flowers, foliage, wood, rock, moss, tree bark or fern
- A-136 Fragrance - using very fragrant flowers
- A-137 Fruitcake - using any types of flowers or fruit that have berries.
- A-138 Gay Mood - using flowers and foliage to delight the eye and cheer the spirit
- A-139 Grandmother's Memory - any flowers in a container of Grandmother's day
- A-140 Iowa - using forms of corn, leaves, tassels and/or ears.
- A-141 Let's Be Different - arrangement in an unusual container.
- A-142 Life Cycle - from buds to full bloom
- A-143 Meadow - using meadow flowers
- A-144 Metal Container - using flowers and foliage in metal container
- A-145 Mini-Magic - small arrangement - 1" - 3"
- A-146 Reverie - to catch us in gentle daydreaming
- A-147 Wild from the Woods - using wild flowers
- A-148 Wood Warmth - using flowers and foliage to enhance the wood container

Division B: Agricultural Products**Corn**

- B-149 White Corn - 1 ear grown previous year
- B-150 Yellow Corn - 1 ear grown previous year
- B-151 Other Corn - 1 ear grown previous year
- B-152 Shelled Corn - 1 gallon grown previous year
- B-153 Popcorn - 3 ears grown previous year
- B-154 Indian Corn - long variety-3 ears grown previous yr
- B-155 Indian Corn - short variety-3 ears grown previous yr
- B-156 Corn, unusual variety-3 ears grown previous yr

Grain & Seeds

- B-157 Oats, White, 1 pint
- B-158 Oats, Yellow, 1 pint
- B-159 Rye, 1 pint
- B-160 Soybeans, 1 pint
- B-161 Other - list name of item on tag

Sheaf Grain & Grasses

- B-162 Alfalfa Sheaf
- B-163 Alsike Sheaf
- B-164 Barley in Straw
- B-165 Blue Grass
- B-166 Brome Grass
- B-167 Clover Red Sheaf
- B-168 Clover Sweet Sheaf
- B-169 Flax in Straw
- B-170 Millet
- B-171 Oats in Straw
- B-172 Red Top
- B-173 Rye in Straw
- B-174 Soybeans
- B-175 Sudan Grass
- B-176 Timothy Sheaf
- B-177 Trefoil
- B-178 Wheat
- B-179 Other - list name of item on tag

See rules on page 2.

You may fill out entry form on last page.

Vegetables will be judged according to Iowa State

Extension rules - see # 8 of Open Class Rules.

Home Grown Vegetables

- B-180 Beans, green snap - 6
- B-181 Beans, yellow snap - 6
- B-182 Beans, purple snap - 6
- B-183 Beans, for drying - 6
- B-184 Beets, table use - 6
- B-185 Broccoli - 1 head
- B-186 Cabbage - 1 head
- B-187 Carrots - 3
- B-188 Cauliflower - 1 head
- B-189 Celery - 1 bunch
- B-190 Cucumbers, slicing - 3
- B-191 Cucumber, pickling - 3
- B-192 Dill - 3 stems
- B-193 Kohlrabi - 3
- B-194 Lettuce, leaf red - 1 plant
- B-195 Lettuce, leaf green - 1 plant
- B-196 Onion, largest
- B-197 Onions, red - 3
- B-198 Onions, white - 3
- B-199 Onions, with green tops - 3
- B-200 Onions, yellow - 3
- B-201 Peas - 6 pods
- B-202 Peas, edible pod - 6 pods
- B-203 Peppers, hot - 3
- B-204 Peppers, sweet - 3
- B-205 Potato, Red - 3
- B-206 Potato, White - 3
- B-207 Potato, Yellow - 3
- B-208 Potato, Other - 3
- B-209 Radishes - 3
- B-210 Spinach - 3 stems
- B-211 Squash - summer - 1
- B-212 Sweet corn - 3 ears
- B-213 Swiss Chard - 3 stalks
- B-214 Tomato - can be green - 3
- B-215 Tomato - cherry - 3
- B-216 Zucchini squash - 1
- B-217 Vegetable garden displays of at least 6 vegetables
- B-218 Herb garden display of at least 3 herbs
- B-219 Other - list name of item on tag

Home Grown Fruits

- B-220 Apple Cortland - 3
- B-221 Apple Delicious Gold - 3
- B-222 Apple Delicious Red - 3
- B-223 Apple Macintosh - 3
- B-224 Apple Wealthy - 3
- B-225 Apple Whitney Crab - 3
- B-226 Apple, Other - 3
- B-227 Plums - 3
- B-228 Grapes - 4 bunches
- B-229 Pears - 3
- B-230 Blackcaps - 12
- B-231 Cherries - 12

Home Grown Fruits

- B-232 Currants, black - 12
- B-233 Currants, red - 12
- B-234 Currants, white - 12
- B-235 Gooseberries - tame - 12
- B-236 Gooseberries - wild - 12
- B-237 Kiwi fruit - 3
- B-238 Raspberries, black - 12
- B-239 Raspberries, red - 12
- B-240 Raspberries, yellow - 12
- B-241 Rhubarb - 3 stalks
- B-242 Strawberries - 12
- B-243 Other fruit - 3 - list name on tag

Division B continued**Canned Goods - in pints, quarts or jelly jars****Fruit**

- B-244 Apples
- B-245 Applesauce
- B-246 Apricots
- B-247 Blackberries
- B-248 Cherries, black
- B-249 Cherries, red
- B-250 Grape juice
- B-251 Ground Cherries
- B-252 Peaches
- B-253 Pears
- B-254 Plums
- B-255 Rhubarb
- B-256 Other fruit - list name on tag

Preserves

- B-257 Apple butter
- B-258 Berry preserves
- B-259 Fruit preserves
- B-260 Other preserves - list name on tag

Jelly

- B-261 Berry jelly
- B-262 Fruit jelly
- B-263 Other jelly - list name on tag

See rules on page 2.

You may fill out entry form on last page.

Canned Goods - in pints, quarts or jelly jars**Pickles**

- B-264 Apple pickles
- B-265 Beet pickles
- B-266 Dill pickles
- B-267 Sweet cucumber pickles
- B-268 Other pickles. - list name on tag
- B-269 Cucumber relish
- B-270 Other relish - list name on tag

Vegetables

- B-271 Beans
- B-272 Beets
- B-273 Carrots
- B-274 Chili Sauce
- B-275 Corn
- B-276 Lima beans
- B-277 Mixed vegetable juice
- B-278 Peas
- B-279 Potatoes
- B-280 Salsa
- B-281 Sauerkraut
- B-282 Spaghetti Sauce
- B-283 Squash
- B-284 Tomato juice
- B-285 Tomato sauce
- B-286 Tomatoes
- B-287 Other vegetable - list name on tag

Baked Goods**Breads - include bread machine breads**

- B-288 White
- B-289 Rye
- B-290 Whole Wheat
- B-291 Quick bread (date, nut, raisin, zucchini, etc.)
- B-292 Coffee Cake - yeast
- B-293 Coffee Cake - non-yeast

- B-294 Biscuits - non-yeast - 3
- B-295 Buns/Rolls - yeast - 3
- B-296 Cinnamon Rolls - 3
- B-297 Muffins - 3
- B-298 Other bread - list name on tag

Cookies

- B-299 Brownies - 3
- B-300 Chocolate - 3
- B-301 Chip cookies (chocolate, butterscotch, etc.) - 3
- B-302 Date - 3
- B-303 Fancy Tea Cookies - 3
- B-304 Ginger - 3

- B-305 Icebox - 3
- B-306 Oatmeal - 3
- B-307 Peanut butter - 3
- B-308 Sugar - frosted - 3
- B-309 Sugar - non-frosted - 3
- B-310 Other cookies - 3 - list name on tag

Pies - can be removed after judging

- B-311 Berry Pie (blueberry, strawberry, raspberry, etc.)
- B-312 Fruit Pie (apple, cherry, peach, etc.)
- B-313 Mince

- B-314 Pecan
- B-315 Raisin - no cream
- B-316 Other pie - list name on tag

See rules on page 2.

You may fill out entry form on last page.

Division C: Textiles & Fabric**Applique, Hand**

- C-317 Pillow
- C-318 Picture
- C-319 Wall hanging
- C-320 Other - list name of item on tag

Crochet

- C-321 Afghan
- C-322 Novelty (animal, basket, doll, slippers, etc.)
- C-323 Bedspread
- C-324 Holiday decoration
- C-325 Doily
- C-326 Edged item (dresser scarf, pillow cases, etc.)
- C-327 Tablecloth

- C-328 Other - list name of item on tag

Cross Stitch

- C-329 Pillow
- C-330 Picture
- C-331 Wall hanging
- C-332 Other - list name of item on tag

Embroidery

- C-333 Centerpiece/Doily/Dresser Scarf
- C-334 Crewel
- C-335 Machine embroidery
- C-336 Picture
- C-337 Pillow Cases - set of 2
- C-338 Pillow Cases with Crochet - set of 2
- C-339 Tablecloth/place mat- set of 2
- C-340 Towel
- C-341 Wall Hanging
- C-342 Other

Needlepoint

- C-343 Pillow
- C-344 Picture
- C-345 Wall hanging
- C-346 Other - list name of item on tag

Fabric Painting

- C-347 Pillow
- C-348 Picture
- C-349 Wall hanging
- C-350 Other - list name of item on tag

Latch Hook

- C-351 Picture
- C-352 Pillow
- C-353 Rug
- C-354 Wall Hanging
- C-355 Other - list name of item on tag

Macrame

- C-356 Plant Hanger
- C-357 Other - list name of item on tag

Quilts (Baby/crib-sized)

- C-358 Applique
- C-359 Hand Quilted
- C-360 Machine Quilted
- C-361 Tied
- C-362 Other - list name of item on tag

Quilts (lap or twin-sized)

- C-363 Applique
- C-364 Hand Quilted
- C-365 Machine Quilted
- C-366 Tied
- C-367 Other - list name of item on tag

Quilts (double or larger)

- C-368 Applique
- C-369 Hand Quilted
- C-370 Machine Quilted
- C-371 Tied
- C-372 Other - list name of item on tag

Quilted Wall hangings - 24' X 24' or smaller

- C-373 Applique
- C-374 Hand Quilted
- C-375 Machine Quilted
- C-376 Tied
- C-377 Other - list name of item on tag

Quilted Wall hangings - Larger than 24' X 24'

- C-378 Applique
- C-379 Hand Quilted
- C-380 Machine Quilted
- C-381 Tied
- C-382 Other - list name of item on tag

Other quilted items

- C-383 Centerpiece/Runner
- C-384 Photo Quilted
- C-385 Pillow
- C-386 Other - list name of item on tag

Sewing - Clothing

- C-387 Dress/jumper, adult
- C-388 Dress/jumper, child
- C-389 Hat
- C-390 Pants/Shorts set
- C-391 Purse or Bag
- C-392 Sleeping garment (robe, pajamas, gown, etc.)
- C-393 Skirt
- C-394 Sweatshirt/suit
- C-395 Sweatshirt made into Other Garment
- C-396 Tailored Coat or Suit
- C-397 T-Shirt
- C-398 Other - list name of item on tag

Competition is open to non-professionals only.

Items may be entered by professionals for display only.

See rules on page 2.

You may fill out entry form on last page.

Division C continued - Other Sewn Items

- C-399 Doll or animal or toy
- C-400 Pillow
- C-401 Household item
- C-402 Other - list name of item on tag

Knitting

- C-403 Afghan
- C-404 Baby item
- C-405 Hat or cap
- C-406 Hat & scarf to match
- C-407 Jacket
- C-408 Mittens or gloves
- C-409 Scarf
- C-410 Poncho/cape/shawl/stole
- C-411 Slippers/socks
- C-412 Sweater
- C-413 Vest or shell
- C-414 Other - list name of item on tag

Tatted Items

- C-415 Collar
- C-416 Doily
- C-417 Edged item (dresser scarf, pillow cases, etc.)
- C-418 Other - list name of item on tag

Other Fabric Techniques

- C-419 Braided rug
- C-420 Decorated ready made item
- C-421 Hardanger
- C-422 Huck Weaving
- C-423 Mat Rug
- C-424 Swedish Weaving
- C-425 Woven Rug
- C-426 Other - list name of item on tag

Silk Flower Arrangements

- C-427 Spring (Easter, etc.)
- C-428 Summer (4th of July, etc.)
- C-429 Fall (Halloween, Thanksgiving, etc.)
- C-430 Winter (Christmas, Valentines, etc.)
- C-431 Other - list name of item on tag

Table Place Settings

- C-432 Spring (Easter, etc.)
- C-433 Summer (4th of July, etc.)
- C-434 Fall (Halloween, Thanksgiving, etc.)
- C-435 Winter (Christmas, Valentines, etc.)
- C-436 Other - list name of item on tag

See rules on page 2.

You may fill out entry form on last page.

Division D: Arts & Crafts**Oil or Acrylic Painting**

- D-437 Animal
- D-438 Flowers
- D-439 Landscape
- D-440 Portrait or figure
- D-441 Still Life
- D-442 Other - list name of item on tag

Watercolor Painting

- D-443 Animal
- D-444 Flowers
- D-445 Landscape
- D-446 Portrait or figure
- D-447 Still Life
- D-448 Other - list name of item on tag

Drawings

- D-449 Chalk Crayon
- D-450 Charcoal
- D-451 Colored Pencil
- D-452 Pastel Crayon
- D-453 Pen & Ink
- D-454 Pencil
- D-455 Prints - intaglios, wood block, etc.
- D-456 Other - list name of item on tag

Photography - 8" x 10" or smaller

- D-457 Animal
- D-458 Family
- D-459 Flowers
- D-460 Iowa scene
- D-461 Landscape
- D-462 Patriotic

Photography - 8" x 10" or smaller (con't)

- D-463 Portrait or figure
- D-464 Still Life
- D-465 Other - list name of item on tag

Photography - larger than 8" x 10"

- D-466 Animal
- D-467 Family
- D-468 Flowers
- D-469 Iowa scene
- D-470 Landscape
- D-471 Patriotic
- D-472 Portrait or figure
- D-473 Still Life
- D-474 Other - list name of item on tag

Miscellaneous

- D-475 Basket Weaving
 - D-476 Batik Painting
 - D-477 Carving
 - D-478 Collage
 - D-479 Furniture
 - D-480 Weaving
 - D-481 Jewelry
 - D-482 Pottery
 - D-483 Rosemaling
 - D-484 Scrapbook
 - D-485 Scrapbook, 1 page
 - D-486 Scrimshaw
 - D-487 Sculpture
 - D-488 Stained Glass
 - D-489 Tole Painting
 - D-490 Other - list name of item on tag
-

Division E: Antiques & Collectibles **Items must be 25 yrs old or older unless otherwise specified.****Glass**

- E-491 Art glass
- E-492 Carnival glass
- E-493 Clear pressed glass
- E-494 Colored pressed glass
- E-495 Cut glass
- E-496 Depression glass
- E-497 Other - list name of item on tag

China

- E-498 Berry set
- E-499 Cup & Saucer
- E-500 Historical China
- E-501 Pitcher
- E-502 Plates
- E-503 Shaving Mug
- E-504 Sugar & Creamer
- E-505 Teapot
- E-506 Vase
- E-507 Other - list name of item on tag

Advertising Items

- E-508 China
- E-509 Glass
- E-510 Metal
- E-511 Paper
- E-512 Wood
- E-513 Other - list name of item on tag

Textiles

- E-514 Collars
- E-515 Doily
- E-516 Dresser Scarf
- E-517 Handkerchief
- E-518 Pillowcase
- E-519 Quilt
- E-520 Rug
- E-521 Tablecloth
- E-522 Other - list name of item on tag

Collections

- E-523 Belt buckles - 3 or more
- E-524 Doll dresses - 3 or more
- E-525 Dolls - 3 or more
- E-526 Handkerchiefs - 3 or more
- E-527 Cookbooks - 3 or more
- E-528 Hand tools - 3 or more
- E-529 Historical items - 3 or more
- E-530 Kitchen items - 3 or more
- E-531 Napkins - 3 or more
- E-532 Photographs - 3 or more
- E-533 Postcards - 3 or more
- E-534 Souvenir spoons - 3 or more
- E-535 Thimbles - 3 or more
- E-536 Toothpick holders - 3 or more
- E-537 Toys - cars, tractors, dolls, farming tools, etc.- 3 or more.
- E-538 Valentines - 3 or more
- E-539 Other - 3 or more - list name of item on tag

Allamakee Heritage - these items can be from any previous years

- E-540 Allamakee County Fair advertisement - 1 or more
- E-541 Allamakee County Fair Book - 1
- E-542 Allamakee County Fair Books, previous years - 3 or more
- E-543 Allamakee County Fair Buttons, previous years - 3 or more
- E-544 Allamakee County Fair photos - 1 or more
- E-545 Allamakee County Fair poster - 1 or more
- E-546 Waukon Corn Days memorabilia - poster, photos, newspaper items
- E-547 Allamakee County Memorial Day memorabilia - posters, photos, newspaper items
- E-548 4th of July celebrations - town, church, family - memorabilia - posters, photos, newspaper items
- E-549 Threshing Days memorabilia - posters, photos, newspaper items
- E-550 Ag Days memorabilia - posters, photos, newspaper items
- E-551 Shooky Fink Days memorabilia - posters, photos, newspaper items
- E-552 John Waukon memorabilia - photos, letters, history, etc.
- E-553 Military memorabilia *See rules on page 2.*
- E-554 Old Mississippi River photos, river boat photos *You may fill out entry form on last page.*
- E-555 Old photos of Allamakee county country schools *Articles entered at a previous Allamakee county*
- E-556 Old photos of Allamakee county churches *fair may not be entered again.*
- E-557 Old photo of Allamakee county homestead
- E-558 Old photo of historic Allamakee County communities - Ion,
Wexford, Elon, Hardin, Churchtown, Ludlow, Lycurgus, Hanover, Maud, Livingood Springs, Volney, etc.
- E-559 Old map of Allamakee County
- E-560 Pen or pencil collections of Waukon, Postville, Lansing, Harpers Ferry, Dorchester, Waterville or New Albin-3 or more.
- E-561 Postcard collections of Waukon, Postville, Lansing, Harpers Ferry, Dorchester, Waterville or New Albin-3 or more.
- E-562 Poster collections of Waukon, Postville, Lansing, Harpers Ferry, Dorchester, Waterville or New Albin - 3 or more
- E-563 Photo collections of Waukon, Postville, Lansing, Harpers Ferry, Dorchester, Waterville or New Albin- 3 or more.
- E-564 Other collections of Waukon, Postville, Lansing, Harpers Ferry, Dorchester, Waterville or New Albin items - 3 or more.

